



<https://www.onisi.jp/english/>

# Create new value in the commercial environment and lifestyle

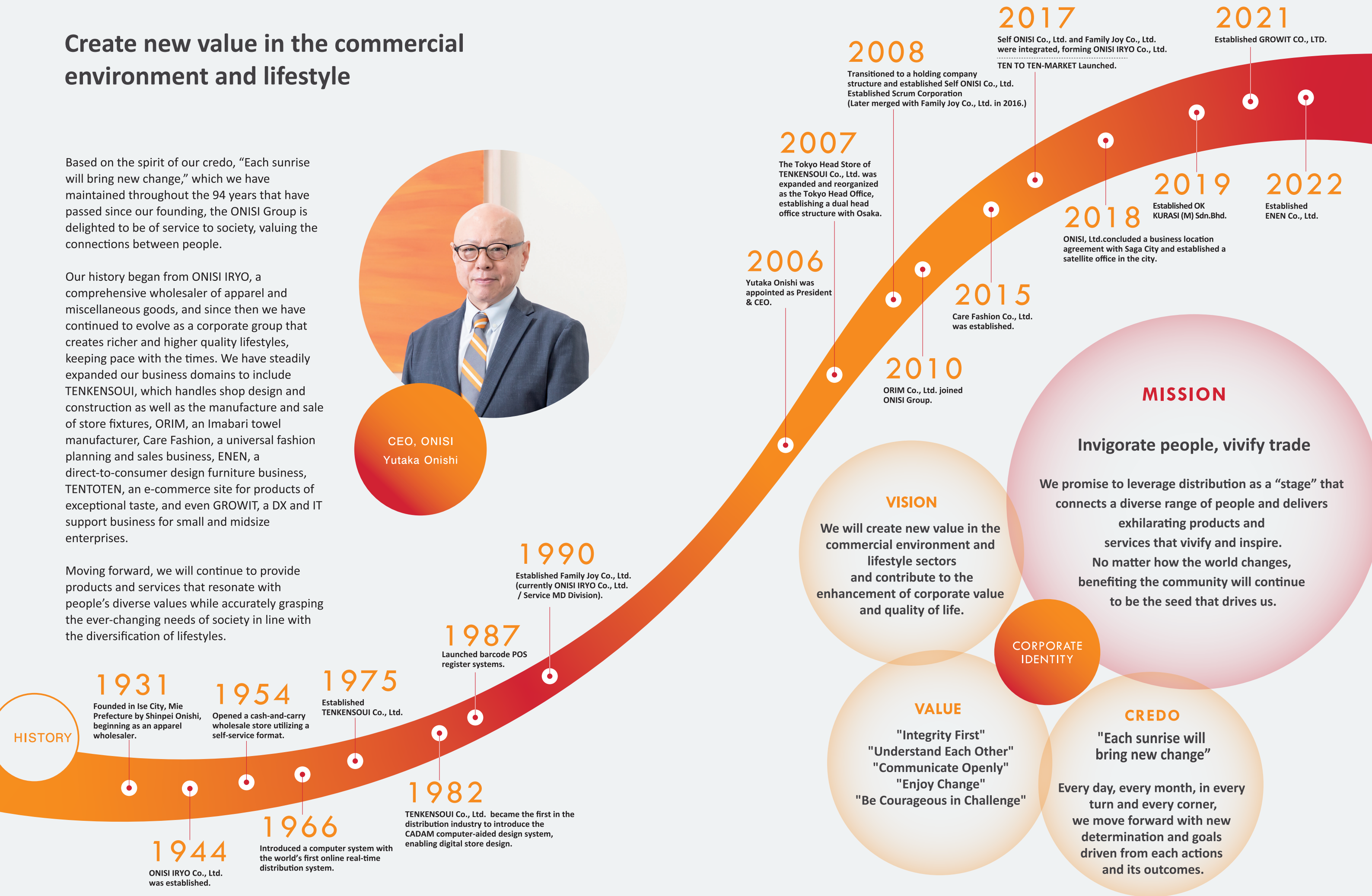
Based on the spirit of our credo, “Each sunrise will bring new change,” which we have maintained throughout the 94 years that have passed since our founding, the ONISI Group is delighted to be of service to society, valuing the connections between people.

Our history began from ONISI IRYO, a comprehensive wholesaler of apparel and miscellaneous goods, and since then we have continued to evolve as a corporate group that creates richer and higher quality lifestyles, keeping pace with the times. We have steadily expanded our business domains to include TENKENSOUJI, which handles shop design and construction as well as the manufacture and sale of store fixtures, ORIM, an Imabari towel manufacturer, Care Fashion, a universal fashion planning and sales business, ENEN, a direct-to-consumer design furniture business, TENTOTEN, an e-commerce site for products of exceptional taste, and even GROWIT, a DX and IT support business for small and midsize enterprises.

Moving forward, we will continue to provide products and services that resonate with people’s diverse values while accurately grasping the ever-changing needs of society in line with the diversification of lifestyles.



CEO, ONISI  
Yutaka Onishi





# ONISI GROUP BUSINESS MAP

Wholesale



大西衣料  
ONISI IRYO

Wholesale of Apparel &  
Merchandising Support

P.5~6



Care Fashion

Senior & Carewear  
Design & Production

P.7



ORIM

Imabari Towels &  
Fashion Accessories

P.8

Wholesale  
& Retail



ten to ten

TEN TO TEN  
Lifestyle Goods  
Design & Production

P.9

ONISI

As the holding company, we develop and  
promote group-wide management strategies,  
conduct management audits and governance,  
and provide oversight and operational support  
across the entire Group.

IT  
Support



GROWIT

IT Solutions and  
Implementation Support

P.13



店研創意

TENKENSQUI

Store & Office Design, Construction  
Fixtures Design & Production

P.11~12

Commercial  
Space  
Solutions



ENEN

Home Furniture,  
Interior Design & Production

P.10

Retail  
Business

ONISI Group operates seven business  
areas across the distribution industry,  
from manufacturing to sales, with a focus  
on apparel and lifestyle wholesale and the  
creation of commercial spaces.  
In a rapidly changing market, the Group  
continues to evolve while contributing to  
society.



From Osaka to Japan and to the world, we shape  
“undiscovered desires” to weave enriching lives.



大西  
衣料  
ONISI IRYO

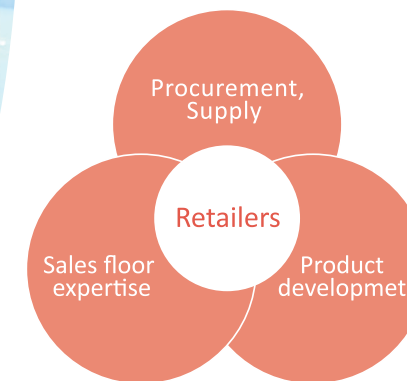
## For the Growth of Retailers

The origin of ONISI IRYO began with a cash-and-carry self-service wholesale store in Osaka’s Semba district, offering low prices and individual item sales. From the start, our mission has been to provide retailers with valuable products and practical services. Today, ONISI IRYO supports retailers with a wide range of products, expert merchandise proposals, and tailored services—from individual items to full-floor automated replenishment.

## Our Strengths

ONISI IRYO is one of Japan’s largest comprehensive apparel wholesalers, offering over 150,000 items annually.

Its strengths include a diverse product range from fashion and everyday apparel to accessories, expert merchandise proposals that support retailers’ sales floors, and the development of original products that meet market needs.



### SERVICE Apparel and lifestyle goods wholesale

#### Members-Only Wholesale Service

Cash-and-carry prices,  
from a single item

Self

A wide range of high-quality products is available at Self Osaka and online at Self WEB SHOP, including individual items, value sets, and cassette-style display trays.



#### Service Merchandising

Comprehensive support for apparel sales floors, from small to large (approx. 50-1000m<sup>2</sup>).

Our unique system automatically replenishes products in optimal quantities based on real-time sales and inventory data collected from our nationwide retail network, allowing full support for store operations.





## Thoughtful In Care Stylish In Fashion



*Care Fashion*

### Enriching the lives of seniors through apparel and fashion

Leveraging decades of experience in comprehensive apparel wholesale, we have shifted our focus to the senior market.

We aim to help older adults lead bright and healthy lives by providing opportunities to enjoy fashion and express their personal style.



SERVICE

#### Care Clothing For Seniors Product Development and Sales

We create universal fashion that combines style with support for seniors' changing bodies, and care apparel with practical features for both caregivers and those needing care, making dressing easy while enjoying fashion and outings.



## From Imabari Towels to Inspired Creations



ORIM

### Original products woven with skill and premium materials

At our own weaving mill with decades of experience producing Imabari towels, we create original products combining skilled craftsmanship and carefully selected materials.

In addition to towels, we offer scarves, stoles, lifestyle accessories, and baby goods designed for everyday use.

SERVICE

#### Imabari Towels/Fashion Accessories Product Development and Sales

We plan, manufacture, and sell certified Imabari towels that meet strict quality standards for absorbency and durability, as well as collaborative "Made in Japan" products combining traditional techniques.

We also offer OEM and sustainable products using customer specifications and recycled materials.





## Bringing Playfulness to Everyday Life

## Fun and Ease Every Day with Your Furniture



### Enjoy sourcing curated fashion, food, home, and leisure items

We curate carefully selected items in fashion, food, home, and leisure—blending proud traditions, craftsmanship, and design excellence to fit modern lifestyles, delivering new value, culture, and style.

We connect makers, stores, and users, helping bring aspirational living to life.

### SERVICE Lifestyle Goods Product Development and Sales

TEN TO TEN - MARKET: a free wholesale platform offering 10,000 products and merchandising support. From 2024, TENTOTEN brings playfulness to everyday life for consumers.



### Bringing store design experience to affordable, high-quality furniture

Leveraging our expertise in store fixture production and manufacturing background at TENKENSOUJI, we provide enjoyable furniture experiences through our AR/VR-enabled online store and showroom-style support stores in Tokyo, Osaka.

By offering furniture designed for long-term use and maintenance, we aim to promote a sustainable consumption cycle.

### SERVICE Home Furniture Product Development and Sales

We offer original furniture and curated interior goods, centered on our modular “KUUM” series, which adapts to changing lifestyles and preferences with a wide variety of colors, sizes, and components.

At ENEN Stores, customers can experience the furniture firsthand, try part replacements, explore 3D simulations with miniature furniture, and participate in workshops.





Connect with people from all over the world.  
Create an exciting store environment.



店研創意  
TENKENSOU

## Total support for store launch and daily management

Founded in 1975 as an extension of ONISI IRYO's store interior business, TENKENSOU pioneered standardized fixtures and early mail-order services in the display industry. Celebrating its 50th anniversary in 2025, the company continues to enhance its website and VR showroom, striving to solve store challenges and be a trusted partner for retailers.

SERVICE Commercial Space Solution

### Space Design and Construction

Comprehensive space creation from planning and design to construction regardless of industry

With over 2,000 store projects annually, we support retailers, restaurants, and service businesses nationwide, offering custom fixtures using our expertise and global manufacturing network.



### Standardized Products Development and Sales

Top-tier selection in the industry, including a wide range of original products

We offer around 70,000 items, including original products, store fixtures, display goods, store decorations, and promotional items. By producing at domestic and overseas factories and managing inventory locally, we reduce costs and shorten delivery lead times. Our products are available through catalogs, online shop, and showrooms in Tokyo, Osaka, and Fukuoka.



### Custom-Made Products development and sales

Support from planning and production to delivery through our domestic and international network

With years of fixture production experience, we deliver cost-effective, original display and promotional fixtures. Our team provides from requirements and estimates to prototyping, production, and delivery.





## Empowering SMEs with Smart, Seamless Digital Transformation



### IT solutions for retail, wholesale, Food & Beverage Operations

GROWIT, originating from ONISI Co., Ltd.'s Information Systems Department, leverages years of experience driving digital transformation within ONISI Group and the Group's retail and wholesale expertise to support your IT initiatives.

From pre-implementation consultation and optimal service proposals to post-implementation support, we provide thorough and attentive assistance.

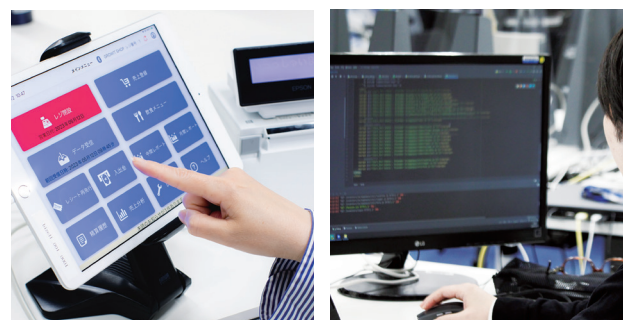


#### SERVICE

### Sales and Implementation Support for IT Solutions

With strengths as both a user and developer, we offer high-quality, cost-effective IT solutions, custom system development, and workflow support for retail, wholesale, and food service businesses.

Combining user insight and development expertise, we provide tailored IT solutions and efficient, high-quality support for retail, wholesale, and food service industries.



## ONISI GROUP COMPANY OVERVIEW

### ONISI IRYO Co., Ltd

Founded: September, 1990  
Capital: JPY 10 million  
No. of employees: 300 (102 full-time, 198 others)  
Representative: Yutaka Onishi  
Location: Head Office / Osaka Main Store  
3-4-12 Kyutaromachi, Chuo-ku, Osaka 541-0056, Japan  
TEL:+81-6-6252-1234

### Care Fashion Co., Ltd

Founded: March, 2015  
Capital: JPY 10 million  
No. of employees: 22 (17 full-time, 5 others)  
Representative: Yutaka Onishi  
Location: 3-4-12 Kyutaromachi, Chuo-ku, Osaka 541-0056, Japan  
TEL:+81-6-4963-8280

### ORIM Co., Ltd

Founded: July, 1986  
Capital: JPY 10 million  
No. of employees: 34 (18 full-time, 16 others)  
Representative: Yutaka Onishi  
Location: Imabari headquarter:  
5-3-1 Tenpozan-cho, Imabari, Ehime 794-0032, Japan  
TEL:+81-898-24-1121  
Tokyo Office:  
Shinjuku Monolith, 16F, 2-3-1 Nishi-Shinjuku,  
Shinjuku-ku, Tokyo 163-0916, Japan  
TEL:+81-3-3348-9371

### TEN TO TEN Co., Ltd

Founded: December, 1994  
Capital: JPY 3.2 million  
No. of employees: 15 (12 full-time, 3 others)  
Representative: Yuki Miyano  
Location: 3-4-12 Kyutaromachi, Chuo-ku, Osaka, 541-0056, Japan  
TEL:+81-6-6251-6661

### ENEN Co., Ltd

Founded: October, 2022  
Capital: JPY 10 million  
No. of employees: 24 (14 full-time, 10 others)  
Representative: Yutaka Onishi  
Location: 3-4-12 Kyutaromachi, Chuo-ku, Osaka, 541-0056, Japan  
TEL:+81-6-6252-1915

### TENKENSOU Co., Ltd

Founded: January, 1975  
Capital: JPY90million  
No. of employees: 281 (203 full-time, 78 others)  
Representative: Yutaka Onishi  
Location: Osaka headquarter:  
3-4-20 Kyutaro-machi, Chuo-ku, Osaka  
541-0056, Japan  
TEL:+81-6-6252-6645  
Osaka Store:  
3-4-20 Kyutaro-machi, Chuo-ku, Osaka  
541-0056, Japan  
TEL:+81-6-6252-6266  
Tokyo headquarter:  
Shinjuku Monolith, 16F, 2-3-1 Nishi-Shinjuku,  
Shinjuku-ku, Tokyo 163-0916, Japan  
TEL:+81-3-6852-1650  
Tokyo Store:  
3-10-5, Higashinohombashi, Chuo-Ku, Tokyo,  
103-0004, Japan  
TEL:+81-3-3663-4488

### GROWIT CO., LTD

Founded: March, 2021  
Capital: JPY 10 million  
No. of employees: 29 (26 full-time, 3 others)  
Representative: Yutaka Onishi  
Location: Head Office:  
3-4-12 Kyutaromachi, Chuo-ku, Osaka,  
541-0056, Japan  
TEL:+81-6-6252-0134  
Saga Office:  
5F Asahi Seimei Saga Ekimae Building,  
1-5-10 Ekimae Chuo, Saga 840-0801, Japan  
TEL:+81-952-22-4915  
Tokyo Office:  
Shinjuku Monolith, 16F, 2-3-1 Nishi-Shinjuku,  
Shinjuku-ku, Tokyo 163-0916, Japan

### ONISI, Ltd.

Founded: March, 1931  
Incorporated: March, 1944  
Capital: JPY 100 million  
Revenue: Non-consolidated JPY 2,254 million (FY Feb 2025)  
Consolidated JPY 31,690 million (FY Feb 2025)  
No. of employees: Non-consolidated 95 (73 full-time, 22 others)  
Consolidated 800 (465 full-time, 335 others)  
Representative: Yutaka Onishi  
Location: 3-4-12 Kyutaromachi, Chuo-ku, Osaka,  
541-0056, Japan  
TEL:+81-6-6252-1212

※No. of employees (as of May 2025)